



# Cambridge IGCSE™

CANDIDATE  
NAME

CENTRE  
NUMBER

--	--	--	--	--

CANDIDATE  
NUMBER

--	--	--	--



**MUSIC**

**0410/01**

Paper 1 Listening

**For examination from 2026**

SPECIMEN PAPER

**Approximately 1 hour 15 minutes**

You must answer on the question paper.

You will need: Insert (enclosed)

## INSTRUCTIONS

- Answer all questions.
- Use a black or dark blue pen.
- Write your name, centre number and candidate number in the boxes at the top of the page.
- Write your answer to each question in the space provided.
- Do **not** use an erasable pen or correction fluid.
- Do **not** write on any bar codes.
- You may use an HB pencil for any music.
- There will be time for you to look at the questions before you hear each extract of music. You may find it helpful to make notes on the music as you listen.

## INFORMATION

- The total mark for this paper is 70.
- The number of marks for each question or part question is shown in brackets [ ].
- The insert contains additional scores referred to in the questions.

This document has **16** pages. Any blank pages are indicated.

## Extract 1

This extract is from the area of study: Romantic music

You will hear an extract which consists of **two** passages from a piece of orchestral music. The two passages are separated by a short gap. The first passage is printed below. The second passage is **not** printed. The whole extract will be played **three** times with a pause between each playing. The second passage will then be played **one** more time.

1 2 3 4 5

6 7 8 9 10

11 12 13 14 15

16 17 18 19 20

*Key and Cadence?* *Accompaniment?*

1 Which of the following is a suitable tempo marking for the first passage?

- Allegro
- Andante
- Grave
- Vivace

[1]

2 Name the key and cadence in bars 7–8.

key .....

cadence .....

[2]

3 In what ways is the accompaniment to bars 9–12 different from the accompaniment to bars 1–6?

.....  
.....  
..... [2]

4 Comment on the **second** passage of music. Refer to any similarities to and differences from the first passage.

.....  
.....  
.....  
.....  
.....  
..... [4]

5 Who composed this music?

Bach

Berlioz

Haydn

[1]

**Extract 2**

This extract is from the area of study: Music and words

You will hear an extract from a popular song. The music will be played **three** times with a pause between each playing. The lyrics are printed below.

- [Verse Part 1] I've tried playing it cool,  
But when I'm looking at you  
I can't ever be brave,  
'Cause you make my heart race.
- [Verse Part 2] Shot me out of the sky,  
You're my kryptonite.  
You keep making me weak,  
Yeah, frozen and can't breathe.
- [Pre-Chorus] Something's gotta give now,  
'Cause I'm dying just to make you see  
That I need you here with me now,  
'Cause you've got that one thing.
- [Chorus] So get out, get out, get out of my head  
And fall into my arms instead.  
I don't, I don't, don't know what it is,  
But I need that one thing,  
And you've got that one thing.

6 What is the tempo in beats per minute (BPM)?

112 BPM

128 BPM

144 BPM

[1]

7 The first two lines of the verse use the following chord sequence:  
D – A – D, D – A – G (I – V – I, I – V – IV)

What chord sequence is used for line 3 ('I can't ever be brave')?

D – A – Bm (I – V – VI)

G – A – D (IV – V – I)

G – A – Bm (IV – V – VI)

A – Bm – D (V – VI – I)

[1]

8 How is the music of Part 2 of the verse different from Part 1?

.....  
.....  
..... [2]

9 Explain the purpose of the pre-chorus, referring to features of the music.

.....  
.....  
..... [2]

10 Identify **two** features of the melody in the chorus which help to define this section as the chorus.

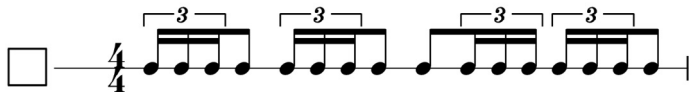
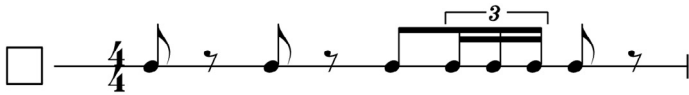
.....  
.....  
..... [2]

## Extract 3

This extract is from the area of study: Music for stage and screen

You will hear an extract of film music. It is used in a science fiction film in scenes featuring an evil warrior. After a short introduction, the main melody is clearly heard. The music will be played **three** times with a pause between each playing.

11 Which of the following rhythms is played during the introduction?



[1]

12 (a) What instrumental family plays the melody?

..... [1]

(b) Which of the following describes the shape of the first phrase of the melody?

- Starts with repeated notes then moves mainly in leaps
- Starts with repeated notes then moves mainly by step
- Starts with an ascending scale then moves mainly in leaps
- Starts with a descending scale then moves mainly in leaps

[1]

13 What features of the music help to describe the evil warrior?

.....

.....

.....

..... [3]

**Extract 4**

This extract is from the area of study: Classical music

You will hear an extract from a piece of chamber music. Look at the printed music in the separate insert. The music will be played **five** times with a pause between each playing.

**14** Which of these terms describes the bass line in bars 1–5?

Alberti bass

Dominant pedal

Tonic pedal

[1]

**15** Compare the music of bars 10–17 with bars 1–8. Comment on similarities and differences.

.....

.....

.....

..... [3]

**16** Which term describes the articulation in bars 18<sup>2</sup>–19?

Slur

Staccato

Tenuto

[1]



17 Which of the following shows the missing melody in bars 27–28?

[1]

18 Which compositional device is used in bars 39<sup>4</sup>–43<sup>2</sup>?

- Ascending sequence
- Descending sequence
- Imitation
- Repetition

[1]

19 Give the exact name of the bracketed interval in bar 57.

..... [2]

20 The extract is the exposition of a movement in sonata form.

(a) In which bar does the second subject begin?

..... [1]

(b) Give **two** reasons for your answer.

.....  
 .....  
 ..... [2]

21 What features of the extract are typical of music from the classical period?

.....

.....

..... [3]

**Extract 5**

This extract is from the area of study: Music for dance

You will hear an extract from a tango. The music will be played **three** times with a pause between each playing.

**22 (a)** What instrument plays the main melody after the short introduction?

..... [1]

**(b)** Describe how the sound is produced on this instrument.

.....  
..... [2]

**23** What features of the music and the way it is played are typical of tango?

.....  
.....  
.....  
..... [3]

## Extract 6

This extract is from the area of study: Music for small ensemble

You will hear **three** passages from the same Hindustani rāga, separated by short gaps. The music will be played **three** times with a pause between each playing.

**24** Which melody instrument is heard in this extract?

Sārangi

Sarod

Sitār

[1]

**25** Identify which section in the rāga each passage comes from and explain which features of each passage are typical of the section.

**(a)** Passage 1:

section .....

features .....

.....

.....

[3]

**(b)** Passage 2:

section .....

features .....

.....

.....

[3]

**(c)** Passage 3:

section .....

features .....

.....

.....

[3]

**Extract 7**

This extract is from the area of study: Baroque music

You will hear an extract from a solo concerto. Look at the printed music in the separate insert. The music will be played **four** times with a pause between each playing.

**26** What key is the music in at the beginning?

..... [1]

**27** What features of the music in bars 1–22 are typical of the opening ritornello in a concerto?

.....  
.....  
..... [2]

**28 (a)** What instrument plays the solo in bars 23–39?

..... [1]

**(b)** What name is given to this section of music?

..... [1]

**29** Describe the accompaniment in bars 29–34.

.....  
.....  
..... [2]

**30** Compare bars 40–43 with bars 1–4.

.....  
.....  
..... [2]

**Extract 8**

This extract is from the area of study: Music for dance

You will hear an extract of Electronic Dance Music (EDM). The music will be played **four** times with a pause between each playing. The extract begins with the passage printed below. The lyrics 'Raise your hands up' are then heard repeatedly.

Extract continues...

31 Using your knowledge of this area of study, write a short description of the music and its performance. In your answer:

- you should refer to the melody, tonality, rhythm, tempo, instrumentation and/or texture
- you should comment on any features which are typical of EDM.

.....

.....

.....

.....

.....

.....

.....

.....

.....

.....

.....

.....

[6]



---

*Copyright Acknowledgements:*

Extract 2                      © Music Publishers Association.

Permission to reproduce items where third-party owned material protected by copyright is included has been sought and cleared where possible. Every reasonable effort has been made by the publisher (Cambridge University Press & Assessment) to trace copyright holders, but if any items requiring clearance have unwittingly been included, the publisher will be pleased to make amends at the earliest possible opportunity.

Cambridge Assessment International Education is part of Cambridge University Press & Assessment. Cambridge University Press & Assessment is a department of the University of Cambridge.